

Reliability.

It's the defining trait of our company and our forklifts.



UniCarriers' roots extend back over 100 years, and over that time, strong, reliable performance has always been the hallmark of our organization, our people and our equipment.

Today, our unrivaled reliability continues to provide UniCarriers' customers with a competitive edge. And together, we move the merchandise that moves world commerce with greater efficiency, economy and reliability.

When it comes to providing forklifts that make a difference for our customers and theirs...

We Never Quit.



479 Brant County Rd 18, Brantford, ON. N3T 5N9
1-800-543-8929
sales@liftway.on.ca - www.liftway-forklifts.ca



UniCarriersAmericas.com

SB-GO4 07-2015 Printed in U.S.A.

UniCarriers® is a registered trademark of UniCarriers Corporation. UniCarriers Americas Corporation reserves the right to make product changes relating to colors, equipment, specifications or available options without notice. For more information, contact your UniCarriers representative.



UNICARRIERS®

FORKLIFT



Engine Powered Forklifts

LP, Dual Fuel & Tier 4 Diesel
8,000 - 11,000 lbs. Capacities | Pneumatic Tire



Platinum GO4 Series

GO4 Series Applications

The GO4 is designed and built for the toughest jobs, the heaviest loads and the harshest environments — making it the go-to machine for the most demanding applications, including:

- Lumberyards
- Brickyards
- Steelyards
- Warehouses
- Factories
- Recycling



Look for these symbols for features available only on UniCarriers forklifts or that provide a proven performance advantage as compared to competitive trucks.



NEVER QUIT.

It defines our forklifts and the company that builds them.

Over the course of a century, the company known as UniCarriers took shape. As we grew and evolved into a US manufacturer with a global reach in nearly 100 countries worldwide, much has changed, but one thing hasn't: our mission. UniCarriers is committed to providing you with the ultimate in reliability, performance, and value.

And that commitment can be seen in the GO4 Series — the ultimate workhorse that can take a beating as it drives productivity...that can work long and hard as it keeps the operator comfortable — and that brings your organization a low cost of ownership, proven reliability, cutting edge innovations, and maximum operator productivity. Plus, it's all backed by the best standard, limited warranty in the business. When you consider all the GO4 offers, you'll see that it's the best choice — the only choice — for your business.



Up Your UpTime

Discover reliability features that cut downtime and keep your business up and running



Comfort Zone

Your drivers and your entire operation will benefit from our comfort & productivity features



Power & Performance

Get higher torque and horsepower from our 4.5 liter LP or dual fuel engine — or our 3.0 liter diesel



Sweet Savings

The GO4 is designed to deliver you a low cost of ownership year after year after year



Play It Safe

Safety is everybody's business, and the GO4 is all business when it comes to safety



Control Freak

With the GO4, you're in complete control when it comes to managing costs and productivity



Make It Yours

Already well appointed, the GO4 can be customized to meet your specific needs



To learn more, and a find a dealer near you, visit UniCarriersAmericas.com



Up Your UpTime

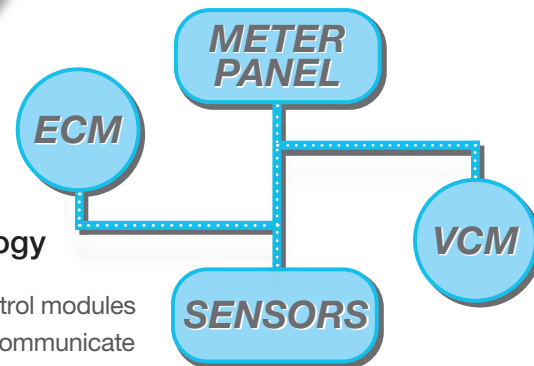
Let's face it, you have no time for downtime. That's why you need a rugged, tough machine that can handle your biggest jobs in the worst environments. So, on the GO4, the main frame members are fabricated from 3/4" steel, with up to 1" thick support brackets, and 1/2" thick steel fenders.

Beyond all that steel, the GO4 offers features that extend service intervals, simplify servicing, and continually monitor both engine and transmission performance. All to keep you going — faster, longer, and stronger.



Consistent Performance through Reliable Technology

The GO4's engine and vehicle control modules along with multi-function display communicate through a reliable CAN-bus network to manage changing system requirements and maintain consistent performance, and all with simplified wiring.



Easy LP Tank Changes

With our ergonomic LP replacement system, an optional bracket swings out 90°, then pulls down to a manageable height, for faster, easier tank replacement.

Standard on LP and duel fuel models.



A Solid Advantage

The GO4 is engineered for the toughest outdoor applications, that's why you'll find a solid **one-piece cast steer axle** — not welded — that's sized for use on 11,000 lb. forklifts, but found across all GO4 models, regardless of lifting capacity.

Keeping Dirt & Water Out

Contamination can damage internal components and potentially cause needless downtime. To defend against this, the GO4 incorporates power steering cylinder boots to protect the cylinder rod against dirt, dust and water.



Protection System

A standard engine and transmission protection system **continuously monitors radiator fluid and transmission oil temperatures**. In the event of excessive heat generation or reduction in oil pressure, truck speed is reduced. This safeguard results in extended engine and drivetrain life.



Bigger, Better Brakes

The brakes on the GO4 are oversized — actually sized for use on 15,000 lb. capacity forklifts — and use a cast iron backing plate and brake pad mounting. This provides **extra durability and extended brake life** — which means less maintenance and lower costs for you.



Reduce Downtime through Self-Diagnostics

Integrated **on-board diagnostics** provide immediate truck status. Standard equipment on the GO4 Series, this intuitive dialogue display, combined with accessible service history, **reduces troubleshooting time**, so the unit is back in operation faster. Everything is done through its smart LCD panel. No handset device is needed.

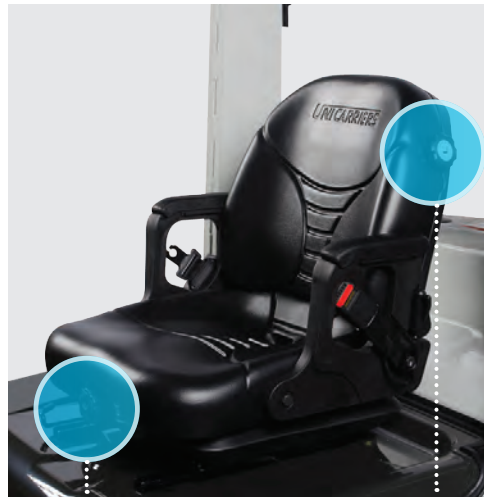


Comfort Zone

Operator comfort equals operator productivity. That simple fact was applied to virtually every aspect of the GO4's design. From the spacious compartment to the logical layout of the controls, our goal was to reduce fatigue and maximize performance. The ergonomic advantages of the GO4 are easy to see...feel, touch, access, operate, and appreciate.

Our Seat Supports Your Driver and Your Productivity

The lumbar support and weight adjustments create customized comfort for the operator, while a non-cinching seatbelt allows a wider range of movement. The **full suspension design absorbs shocks** for a smoother, more comfortable ride — and it's all standard on GO4 Series forklifts.



Weight adjustment

Lumbar support adjustment



Plenty of Room for Hard Hats

The GO4 features a high overhead guard with a full 45.1" of headroom. This extra clearance is important for operations requiring hard hat usage, and also creates a more wide-open feeling for operators.

Sure-Footed Handling

The low pedal angles allow **heel-to-toe movement** between the accelerator and brake pedals for easier handling. The brake also features a hydraulic booster that requires less force to engage the brake, reducing operator fatigue even more.



A Step Up

Operator entry and exit is simplified with the large step integrated into the GO4 design. The step is extra long and deep for more confident footing, and its low height reduces driver effort when entering the compartment.



Improved Control and Security

Maneuverability during reverse driving is easier with an optional secure assist grip. And it helps keep the operator's hand inside the compartment where it belongs. A horn button is included.



Single Handle Control Lever

Faster, easier and more fluid, our single handle control **combines both lift and tilt functions for greater productivity.** It's standard equipment on the GO4 Series — and not available from any other forklift brand. Separate control levers are available at no charge.



Wide Open Spaces

Beyond generous headroom, the operator compartment features plenty of foot and legroom, a small diameter steering wheel, automotive-style controls, and low noise levels. All designed for greater operator comfort and productivity — hour after hour.



A Very Smooth Idea

The GO4 features a floating powertrain that includes four independent vibration dampeners to help reduce operator fatigue. Vibration is further lessened thanks to a standard thick rubber, non-slip floor mat.

Power & Performance



When it comes to delivering the power you need to get the job done, the GO4 offers more than just brute strength. The GO4 brings you multiple engine choices, each perfectly matched to

our heavy-duty transmissions to deliver higher power with lower emissions, better fuel efficiency, and greater torque. But throughout the GO4, in its hydraulics, electronics, and internal components, you'll discover a machine that doesn't just do the job, but does it better, more efficiently, and more economically.



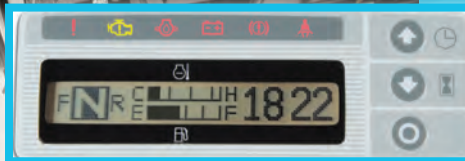
LP or Dual Fuel, the TB45 is a Powerhouse

Powerful and highly efficient, our TB45 engine offers advanced features to drive performance and deliver rock solid reliability. These include electronic fuel injection, and an engine control system that monitors key engine functions to deliver superior fuel economy with reduced emission levels. There's even an advanced Engine/Transmission Protection and Warning System that constantly guards against overheating or loss of oil pressure.

EMISSION CERTIFICATION LEVELS*

- HC+NOx=0.5 g/kW
- CO=6.5 g/kW (68.4% below EPA standard)

*CARB model year 2015 engine certification



The ZD30 Diesel: Higher Power/Lower Emissions

This turbocharged, 16-valve, double overhead camshaft diesel features electronic common rail injection, cooled exhaust gas recirculation system, and closed diesel particulate filter for emission levels significantly below EPA Tier 4 standards. The ZD30 has **10% greater fuel economy** than our previous model, while the Quick Glow System dramatically improves cold weather starting. The advanced Engine/Transmission Protection and Warning System also constantly guards against overheating or loss of oil pressure.

EMISSION CERTIFICATION LEVELS*

- HC+NOx=2.3 g/kW
- CO=0.1 g/kW
- PM**=.02 g/kW

*CARB model year 2015 engine certification
**Particulate matter



Mounting Points



Greater Reliability Is a Very Cool Idea

An extra large, aluminum, cross flow radiator offers maximum heat capacity and greater cooling performance. Mounted to the frame in only two places, and resting on two rubber pads to minimize vibration, it **decreases frame flex torsion** that can cause damage as seen with typical 4-point mount designs.



Pumping Up the Power

To deliver superior hydraulic response time, the GO4 incorporates tandem hydraulic pumps — one for lifting and one for steering. The result is increased load lift speeds, and no loss of steering and maneuvering power while using the hydraulics.

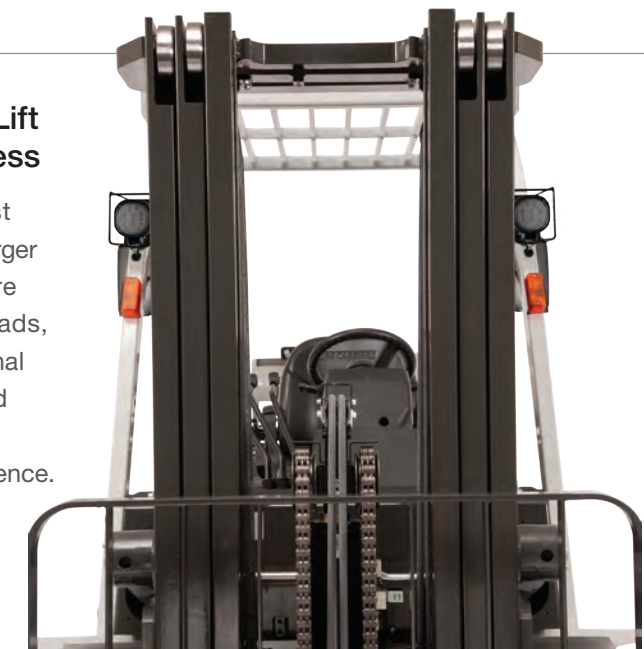


Heavy Duty...Maxed Out

The GO4 features an oversized, heavy-duty differential and drivetrain. **Rated for use on 11,000 lb.** forklifts, you'll find it on all GO4 models.

A Mast That Can Lift Your Entire Business

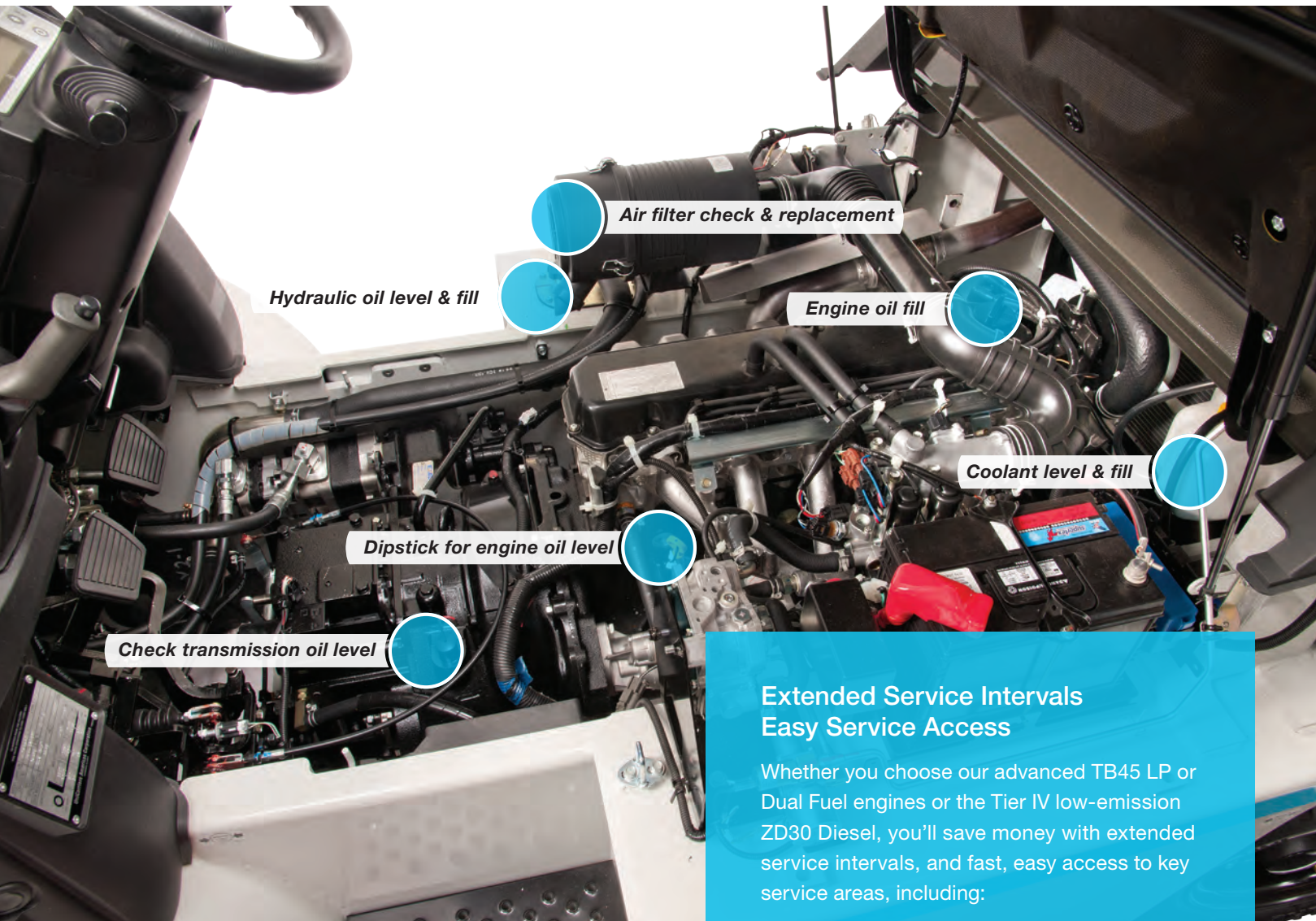
The GO4's robust mast construction features larger rail dimensions to more easily handle heavy loads, and provides exceptional reliability and enhanced visibility to the load for greater operator confidence.





Sweet Savings

The rugged design of the GO4 not only excels in the toughest environments, but saves you time, effort, and expense, day after day. Our commitment to cutting your costs begins with our fuel-efficient engines, onboard diagnostics, and ergonomic compartment layout. But, it can also be seen in the GO4's key components and innovative options. Advantages that drive up productivity and profits, while driving down costs.

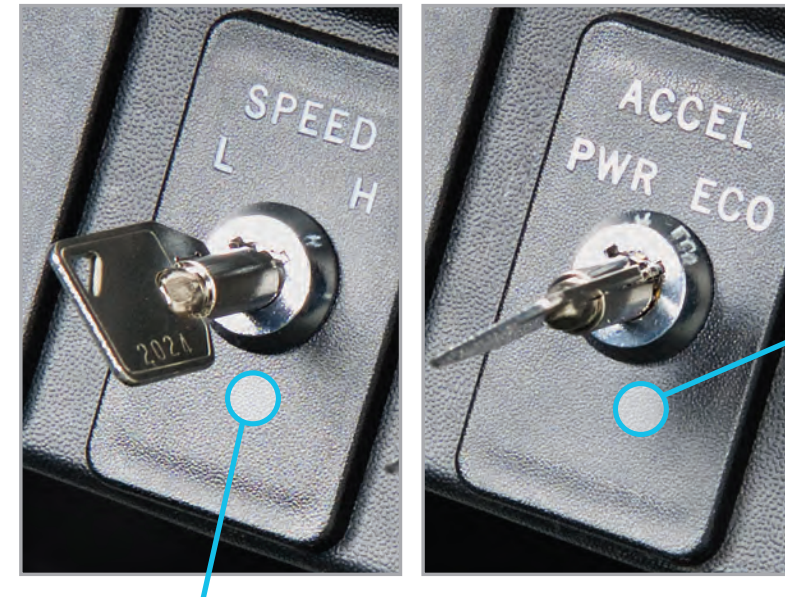


Extended Service Intervals Easy Service Access

Whether you choose our advanced TB45 LP or Dual Fuel engines or the Tier IV low-emission ZD30 Diesel, you'll save money with extended service intervals, and fast, easy access to key service areas, including:

- Easy Oil Filter Replacement
- Fast Fan Belt Adjustment
- Accessible Radiator

TB45 engine shown.



Control Speed and Costs

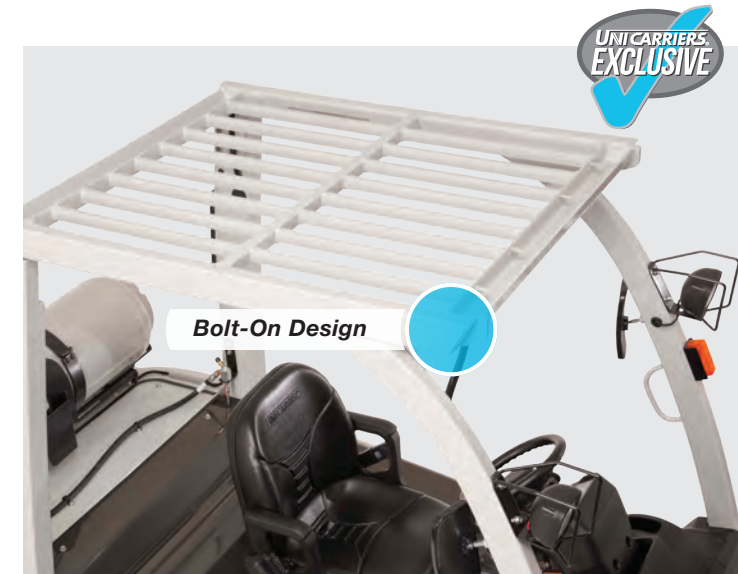
With available High/Low Travel Speed Control*, an operator can switch between maximum high/low speeds to designate speed settings for varying applications — without sacrificing torque or RPM. That can mean greater fuel savings for you and a more secure working environment for everyone.

Optional feature on models powered by TB45 engine.
Standard on ZD30 models and accessible through the meter panel.
* Pre-set speeds adjusted by a service technician

Reduce Tire Wear & Save Fuel

The power/economy controlled acceleration feature — optional on TB45 models — restricts the acceleration rate to **maximize fuel economy and minimize tire spin**. Gradual acceleration is also **useful when moving fragile loads or operating in confined areas**. Three design choices offer increasingly more **security against tampering**: toggle switch, key switch or set internal parameters to keep this feature activated.

ZD30 Tier IV diesel models include controlled acceleration as standard and accessible through the meter panel.



Our Overhead Guard Reduces Your Overhead

Our five-piece overhead guard takes 75% less time to make needed replacements versus most competitors' single-piece, welded-on guards. That cuts downtime and costs.



Long Life LEDs

Everything about the GO4 is designed for longer life and greater savings, including the standard LED headlights that deliver greater visibility while being more economical and cost-effective over the life of the machine.



Play It Safe



Chances are, creating a secure working environment for your employees is a priority for you. It was also a priority for us in designing and building the GO4. This unyielding commitment to protecting the work environment can be found in the rugged frame of the GO4. It can also be seen in the lower emissions of our advanced engines, and the spaciousness and ergonomic layout of our operator's compartment. Creating a more secure workplace, without sacrificing performance, is what the GO4 is all about.



Operator Presence System

This comprehensive system includes a **seat-actuated power interrupt** with mast-lock, automatically preventing lift and tilt operations if the operator leaves the seat. The **return-to-neutral** feature minimizes forklift movement if the operator leaves the truck while still in gear. Other audible and visual warnings come standard, including **parking brake warning** and **seatbelt alarm**.

Password Protected Security

Using a PIN code/password entry feature helps **assure that only authorized drivers are operating your GO4**. Up to five unique performance settings can be created, based on application and/or individual operator skill level. It also offers an important reporting function: a readout of the operating hours logged by each code or operator.



ZD30 engine model shown.



A Stable Approach to Operator Confidence

Rated for use on 11,000 lb. capacity trucks, but standard on all GO4 models, the high roll center rear axle places the articulation point high on the axle, closer to the truck's center of gravity. The result is enhanced stability and greater control during operation.



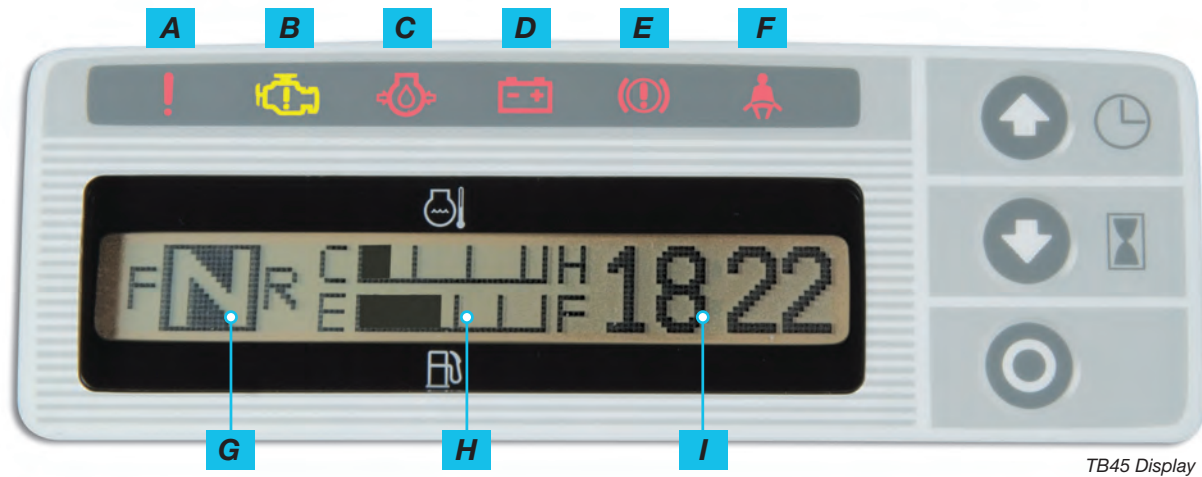
Less Fatigue Means More Control

The GO4 is designed to keep operators alert and in full control of the truck. Among its many features to prevent operator fatigue are: an adjustable full suspension seat; responsive hydrostatic steering; heavy insulation to reduce noise and engine heat; ergonomically positioned controls; and an automotive-type floating powertrain that reduces vibration.

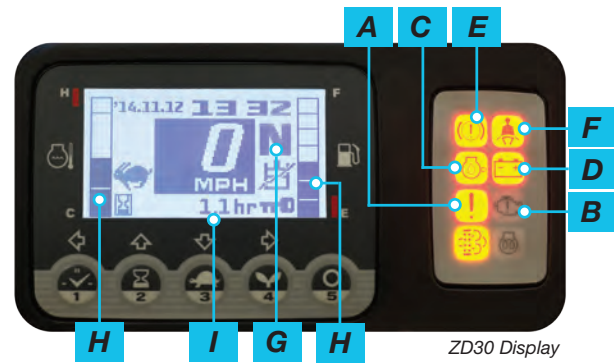


Control Freak

When it comes to controlling the vehicle and controlling costs, the GO4 has the innovative technology and features you and your operators are looking for. There are alerts and controls that can manage costs, prevent downtime, improve productivity, and create a more secure workplace for everyone. With the GO4, you're always in control.



TB45 Display



ZD30 Display

While the standard meter panel varies based on engine, the functions and features are largely the same:

- A** Multipurpose warning
- B** Check engine warning
- C** Oil pressure warning
- D** Charge warning
- E** Parking brake warning
- F** Seat belt warning
- G** Directional indicator
- H** Fuel & water temperature gauges
- I** Multi-function display:
 - Hour meter
 - Clock/calendar
 - Speedometer
 - Programmable service reminder
 - Warning indications
 - Error codes

The Ultimate in Control

The interactive meter panel on the GO4 provides operators and technicians with a wealth of information through its LCD warnings and readouts. Using the numbered function keys you can program settings, perform maintenance tasks, and access service history.

The LCD display offers:

- Security PIN Access for up to 5 different operators
- Maximum Travel Speed Control
- Individual Operator Hours

Find Your Top Travel Speed Easier



With an optional speed switch, drivers can **toggle from high speed pre-set in one area then select a slow speed**, confident they are adhering to corporate safety requirements.



Select the security key switch option to **lock in a pre-set high or low speed**.

(Above features are standard on ZD30 models and accessible through the meter panel, optional on TB45 models.)



Forward Thinking Back-Up Alarm

Our standard back-up alarm provides plenty of notice to pedestrians and other drivers in the area. For applications with varying noise levels, there is an optional self-adjusting alarm that adjusts sound volume based on ambient noise levels.



Parking Brake Alarm

As part of the Operator Presence System, a warning buzzer alerts the driver if he leaves the seat without first setting the parking brake.



Adjustable Steering Column

The GO4 features an infinitely adjustable steering column with a small diameter steering wheel to give your drivers maximum control of the forklift.



Single Handle Control Lever

Faster, easier and more fluid, our single handle control **combines both lift and tilt functions for greater productivity**. It's standard equipment on the GO4 Series — and not available from any other forklift brand. Separate control levers are available at no charge.



Make It Yours



The rugged, powerful GO4 comes with a wide array of standard features that maximize uptime and productivity. We also offer a menu of options to customize your forklift to your specific requirements. Shown here is just a selection of what we offer. If you don't see what you're looking for, contact your UniCarriers dealer for more options.



• Strobe & Work Lights

• Clamp Release Switch

• Rearview Mirror

• Air Intake Pre-Cleaner



Side Shifter

Operators will experience greater efficiency due to fewer required moves when storing and retrieving loads.



Swivel Seat

Convenient release lever allows the seat to rotate 15° in either direction. Includes overhead guard mounted handle and horn button to simplify reverse driving.



Protective Packages

Protective packages are available to keep dust, water, and debris from entering the engine compartment and affecting key components. (Wheel well cover shown.)



Dual Tires

Dual drive tires offer enhanced stability when high or heavy loading is required.



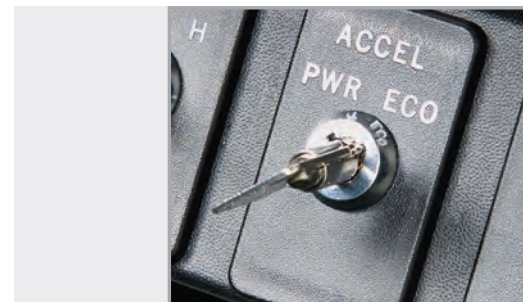
Operator Conveniences

Select from a variety of equipment, including rear work light, strobe, or brake lights, turn signals, and mirrors.



Overhead Exhaust

Design directs exhaust fumes away from the operator area and minimizes ground debris from entering the engine compartment.



Power/Economy Controlled Acceleration

Restricts acceleration rate to maximize fuel economy and reduce tire spin and wear. Gradual acceleration is useful when moving fragile loads or operating in confined spaces. (Standard on ZD30 models; optional on TB45 models.)



Travel Speed Control

Select maximum travel speed settings based on operator skill level or application. Security key switch available to prevent tampering with settings. (Standard on ZD30 models; optional on TB45 models.)



Spinner Knob for Easier Handling

Provides operators with easier control behind the wheel. Standard steering wheel includes knock-out plug to simplify installation after purchase.

Special Application Packages

The GO4 is engineered and built to work in the toughest environments — including lumberyards, brickyards, recycling facilities, factories, warehouses, and more. When unique environments call for even greater performance, UniCarriers offers you special option packages for enhanced durability, greater reliability and maximum uptime.



Anti-Debris Package

For building materials, lumber, or recycling operations, protection against debris, such as stretch wrap or large pieces of cardboard, the GO4 is available with the optional Anti-Debris Package. The package includes an under-engine cover, vented steer tire housing (wheel well) covers, rubber front apron above the differential, tilt cylinder covers, and a dust-proof differential breather. Wheel well covers are standard on ZD30 models.



Reduced-Noise Package

To maintain lower noise levels on the GO4, the optional Reduced-Noise Package features heavy insulation around the truck, including under the engine hood, rear panel, radiator cover, side panels, and floorboards. In addition, the package includes an under-engine cover, steer tire housing (wheel well) covers, rubber front apron above the differential, and tilt cylinder covers.



Anti-Dust Package

For additional protection against dirt and dust, particularly in foundries, glass manufacturing, concrete, or brickyard applications, the optional Anti-Dust Package includes all the features of the Anti-Debris Package option, with the addition of a sealed alternator.



Anti-Corrosion Package

For corrosive environments, such as stevedoring or chemical plants, the optional Anti-Corrosion Package helps protect the GO4 by incorporating an under-engine cover, steer tire housing (wheel well) covers, rubber front apron above the differential, thicker plating on the tilt cylinder rods, and corrosion-resistant wheel nuts, lift chains, hydraulic piping, and power steering piping.

● Standard ○ Optional

Option Availability

	TB45	ZD30	
	LP	DUAL FUEL	DIESEL
VEHICLE MANAGEMENT			
Vehicle Control Module (VCM)	●	●	●
Operator security PIN access	●	●	●
Interactive LCD meter panel display	●	●	●
Engine coolant temperature gauge	●	●	●
Oil pressure, transmission fluid and low coolant warning lights	●	●	●
Low LP fuel warning light	●	●	—
Fuel gauge (gas, diesel)	—	●	●
Air cleaner warning light	●	●	●
On-board diagnostics and service reminder	●	●	●
POWERTRAIN			
Electronic Engine Control System	●	●	●
Engine/transmission protection and warning system	●	●	●
Floating powertrain for reduced vibration	●	●	●
Three-way catalytic converter	●	●	—
Diesel oxidation catalyst	—	—	●
Travel speed control (high/low speed selector)	○	○	●
Controlled acceleration (power/economy selector)	○	○	●
Radiator screen	○	○	○
BRAKE			
Parking brake with warning buzzer	●	●	●
Hydraulic boosted brakes	●	●	●
HYDRAULIC SYSTEM			
Single lift/tilt control lever	●	●	●
Separate lift & tilt control levers	○	○	○
Automatic fork leveling	○	○	○
OPERATOR CONVENIENCES			
Full suspension seat with weight & lumbar adjustment	●	●	●
LED headlights (mounted to overhead guard)	●	●	●
Rearview mirrors	○	○	○
Rear LED combination light package (turn, stop, back-up)	○	○	○
Rear LED work light	○	○	○
Strobe light	○	○	○
Rotating beacon	○	○	○
Low overhead guard (88.6")	○	○	○
PROTECTION/SECURITY			
Operator Presence System (with return-to-neutral and auto mast lock)	●	●	●
Back-up warning alarm	●	●	●
Self adjusting back-up alarm	○	○	○
Fire extinguisher	○	○	○
UL safety rating	○	—	—

Specifications

	TB45	ZD30
ENGINE MODELS	4.5 LITER / GAS, DUAL FUEL	3.0 LITER TURBO / DIESEL
Displacement – cu. in	273	180
Rated Output (Horsepower) – hp/rpm	95.6 @ 2450	73.7 @ 2400
Rated Torque – ft-lb/rpm	209.4 @ 1600	181 @ 1800